

Albatron

لیست قیمت محصولات TVI/CVI آلباترون فروردین ماه ۱۴۰۵



AC-DH1020-SL

2.0 Megapixel Camera
 1/2.9" Starlight CMOS Sensor
 3.6mm F1.2 Starlight Fixed Lens
 1920(H) × 1080(V) Resolution
 DWDR, 3DNR, AWB, BLC
 24 SMD LED
 45m IR Length
 OSD Menu by UTC (output 4-in-1)
 IP66, Metal Case

22.600.000



AC-DH1050-E

5.0 Megapixel Camera
 1/2.8" Starlight CMOS Sensor
 3.6mm F1.2 Starlight Fixed Lens
 2560(H) × 1920(V) Resolution
 DWDR, 3DNR, AWB, BLC
 24 SMD LED
 45m IR Length
 OSD Menu by UTC (output 4-in-1)
 IP66, Metal Case

26.900.000



AC-DH2220-DSCA/28

2.0 Megapixel HDTVI Camera
 1/2.9" Starlight CMOS Sensor
 2.8mm F1.2 Starlight Fixed Lens
 1920(H) × 1080(V) Resolution
 DWDR, 3DNR, AWB, BLC
 2 Dual LED
 30m Warmlight, 40m IR Length
 OSD Menu by UTC (output 4-in-1)
 Built in MIC
 Support Audio in TVI & CVI Mode
 (Compatible With Dahua Recorder)

23.500.000



AC-DH2620-WSCA

2.0 Megapixel HDTVI Camera
 1/2.9" Starlight CMOS Sensor
 2.8mm F1.2 Starlight Fixed Lens
 1920(H) × 1080(V) Resolution
 DWDR, 3DNR, AWB, BLC
 6 Power LED
 40m Warmlight Length
 OSD Menu by UTC (output 4-in-1)
 Built in MIC
 Support Audio in TVI & CVI Mode
 (Compatible With Dahua Recorder)

22.200.000



AC-DH2650-WSA

5.0 Megapixel HDTVI Camera
 1/2.8" Starlight CMOS Sensor
 2.8mm F1.2 Starlight Fixed Lens
 2560(H) × 1920(V) Resolution
 DWDR, 3DNR, AWB, BLC
 6 Power LED
 40m Warmlight Length
 OSD Menu by UTC (output 4-in-1)
 Built in MIC

28.800.000



AC-DH2420-WSCA

2.0 Megapixel HDTVI Camera
 1/2.9" Starlight CMOS Sensor
 2.8mm F1.2 Starlight Fixed Lens
 1920(H) × 1080(V) Resolution
 DWDR, 3DNR, AWB, BLC
 3 Power LED
 30m Warmlight Length
 OSD Menu by UTC (output 4-in-1)
 Built in MIC
 Support Audio in TVI & CVI Mode
 (Compatible With Dahua Recorder)

22.000.000



AC-DH2920-DSCA

2.0 Megapixel HDTVI Camera
 1/2.9" Starlight CMOS Sensor
 2.8mm F1.2 Starlight Fixed Lens
 1920(H) × 1080(V) Resolution
 DWDR, 3DNR, AWB, BLC
 3 Dual EXIR LED
 30m Warmlight, 40m IR Length
 OSD Menu by UTC (output 4-in-1)
 Built in MIC
 Support Audio in TVI & CVI Mode
 (Compatible With Dahua Recorder)
 IP67, Metal Ball, Easy Installation

30.400.000



AC-DH2920-WSCA

2.0 Megapixel HDTVI Camera
 1/2.9" Starlight CMOS Sensor
 2.8mm F1.2 Starlight Fixed Lens
 1920(H) × 1080(V) Resolution
 DWDR, 3DNR, AWB, BLC
 3 EXIR LED
 30m Warmlight Length
 OSD Menu by UTC (output 4-in-1)
 Built in MIC
 Support Audio in TVI & CVI Mode
 (Compatible With Dahua Recorder)
 IP67, Metal Ball, Easy Installation

29.300.000



AC-DH2950-DSA

5.0 Megapixel HDTVI Camera
 1/2.8" Starlight CMOS Sensor
 2.8mm F1.2 Starlight Fixed Lens
 2560(H) × 1920(V) Resolution
 DWDR, 3DNR, AWB, BLC
 3 Dual EXIR LED
 30m Warmlight, 40m IR Length
 OSD Menu by UTC (output 4-in-1)
 Built in MIC
 IP67, Metal Ball, Easy Installation

37.700.000



AC-DH2950-WSA

5.0 Megapixel HDTVI Camera
 1/2.8" Starlight CMOS Sensor
 2.8mm F1.2 Starlight Fixed Lens
 2560(H) × 1920(V) Resolution
 DWDR, 3DNR, AWB, BLC
 3 EXIR LED
 30m Warmlight Length
 OSD Menu by UTC (output 4-in-1)
 Built in MIC
 IP67, Metal Ball, Easy Installation

36.400.000



AC-DH2720-WSCA

2.0 Megapixel HDTVI Camera
 1/2.9" Starlight CMOS Sensor
 2.8mm F1.2 Starlight Fixed Lens
 1920(H) × 1080(V) Resolution
 DWDR, 3DNR, AWB, BLC
 3 EXIR LED
 30m Warmlight Length
 OSD Menu by UTC (output 4-in-1)
 Built in MIC
 Support Audio in TVI & CVI Mode
 (Compatible With Dahua Recorder)
 IP67, Metal Ball, Easy Installation

29.300.000



AC-DH2750-DSA

5.0 Megapixel HDTVI Camera
 1/2.8" Starlight CMOS Sensor
 2.8mm F1.2 Starlight Fixed Lens
 2560(H) × 1920(V) Resolution
 DWDR, 3DNR, AWB, BLC
 3 Dual EXIR LED
 30m Warmlight, 40m IR Length
 OSD Menu by UTC (output 4-in-1)
 Built in MIC
 IP67, Metal Ball, Easy Installation

37.700.000



AC-DH2350-WSA

5.0 Megapixel HDTVI Camera
1/2.8" Starlight CMOS Sensor
2.8mm F1.2 Starlight Fixed Lens
2560(H) × 1920(V) Resolution
DWDR, 3DNR, AWB, BLC
6 Sunny LED
40m Warmlight Length
OSD Menu by UTC (output 4-in-1)
Built in MIC
IP66, Metal Case

34.600.000



AC-BH5920-WS

2.0 Megapixel Camera
 1/2.9" Starlight CMOS Sensor
 3.6mm F1.2 Starlight Fixed Lens
 1920(H) × 1080(V) Resolution
 DWDR, 3DNR, AWB, BLC
 3 EXIR LED
 30m Warmlight Length
 OSD Menu by UTC (output 4-in-1)
 IP66, Metal Case, Easy Installation

26.700.000



AC-BH5950-DSA

5.0 Megapixel HDTV Camera
 1/2.8" Starlight CMOS Sensor
 3.6mm F1.2 Starlight Fixed Lens
 2560(H) × 1920(V) Resolution
 DWDR, 3DNR, AWB, BLC
 3 EXIR LED
 30m Warmlight Length
 OSD Menu by UTC (output 4-in-1)
 Built in MIC
 IP66, Metal Case, Easy Installation

36.600.000



AC-BH5950-WSA

5.0 Megapixel HDTV Camera
 1/2.8" Starlight CMOS Sensor
 3.6mm F1.2 Starlight Fixed Lens
 2560(H) × 1920(V) Resolution
 DWDR, 3DNR, AWB, BLC
 3 Dual EXIR LED
 30m Warmlight, 40m IR Length
 OSD Menu by UTC (output 4-in-1)
 Built in MIC
 IP66, Metal Case, Easy Installation

35.600.000



AC-BH5820-DS

2.0 Megapixel Camera
 1/2.9" Starlight CMOS Sensor
 3.6mm F1.2 Starlight Fixed Lens
 1920(H) × 1080(V) Resolution
 DWDR, 3DNR, AWB, BLC
 3 Dual EXIR LED
 30m Warmlight, 40m IR Length
 OSD Menu by UTC (output 4-in-1)
 IP66, Metal Case, Easy Installation

28.600.000



AC-BH5820-WS

2.0 Megapixel Camera
 1/2.9" Starlight CMOS Sensor
 3.6mm F1.2 Starlight Fixed Lens
 1920(H) × 1080(V) Resolution
 DWDR, 3DNR, AWB, BLC
 3 EXIR LED
 30m Warmlight Length
 OSD Menu by UTC (output 4-in-1)
 IP66, Metal Case, Easy Installation

27.600.000



AC-BH5820-WS/28

2.0 Megapixel Camera
 1/2.9" Starlight CMOS Sensor
 2.8mm F1.2 Starlight Fixed Lens
 1920(H) × 1080(V) Resolution
 DWDR, 3DNR, AWB, BLC
 3 EXIR LED
 30m Warmlight Length
 OSD Menu by UTC (output 4-in-1)
 IP66, Metal Case, Easy Installation

27.600.000



AC-BH5850-DSA

5.0 Megapixel HDTVI Camera
 1/2.8" Starlight CMOS Sensor
 3.6mm F1.2 Starlight Fixed Lens
 2560(H) × 1920(V) Resolution
 DWDR, 3DNR, AWB, BLC
 3 Dual EXIR LED
 30m Warmlight, 40m IR Length
 OSD Menu by UTC (output 4-in-1)
 Built in MIC
 IP66, Metal Case, Easy Installation

37.500.000



AC-BH5850-WSA

5.0 Megapixel HDTVI Camera
 1/2.8" Starlight CMOS Sensor
 3.6mm F1.2 Starlight Fixed Lens
 2560(H) × 1920(V) Resolution
 DWDR, 3DNR, AWB, BLC
 3 EXIR LED
 30m Warmlight Length
 OSD Menu by UTC (output 4-in-1)
 Built in MIC
 IP66, Metal Case, Easy Installation

36.500.000



AC-BH6920-DS

2.0 Megapixel Camera
 1/2.9" Starlight CMOS Sensor
 3.6mm F1.2 Starlight Fixed Lens
 1920(H) × 1080(V) Resolution
 DWDR, 3DNR, AWB, BLC
 4 Dual EXIR LED
 40m Warmlight, 60m IR Length
 OSD Menu by UTC (output 4-in-1)
 IP66, Metal Case

29.900.000



AC-BH6920-WS

2.0 Megapixel Camera
 1/2.9" Starlight CMOS Sensor
 3.6mm F1.2 Starlight Fixed Lens
 1920(H) × 1080(V) Resolution
 DWDR, 3DNR, AWB, BLC
 4 EXIR LED
 40m Warmlight Length
 OSD Menu by UTC (output 4-in-1)
 IP66, Metal Case

28.900.000



AC-BH6950-DSA

5.0 Megapixel HDTVI Camera
 1/2.8" Starlight CMOS Sensor
 3.6mm F1.2 Starlight Fixed Lens
 2560(H) × 1920(V) Resolution
 DWDR, 3DNR, AWB, BLC
 4 Dual EXIR LED
 40m Warmlight, 60m IR Length
 OSD Menu by UTC (output 4-in-1)
 Built in MIC
 IP66, Metal Case

38.900.000



AC-BH6950-WSA

5.0 Megapixel HDTVI Camera
 1/2.8" Starlight CMOS Sensor
 3.6mm F1.2 Starlight Fixed Lens
 2560(H) × 1920(V) Resolution
 DWDR, 3DNR, AWB, BLC
 4 EXIR LED
 40m Warmlight Length
 OSD Menu by UTC (output 4-in-1)
 Built in MIC
 IP66, Metal Case

37.900.000



AC-BH7050-DSA

5.0 Megapixel HDTV Camera
 1/2.8" Starlight CMOS Sensor
 3.6mm F1.2 Starlight Fixed Lens
 2560(H) × 1920(V) Resolution
 DWDR, 3DNR, AWB, BLC
 4 Power Dual EXIR LED
 50m Warmlight, 60m IR Length
 OSD Menu by UTC (output 4-in-1)
 Built in MIC
 IP66, Metal Case, Easy Installation

41.700.000



AC-BH7050-WSA

5.0 Megapixel HDTV Camera
 1/2.8" Starlight CMOS Sensor
 3.6mm F1.2 Starlight Fixed Lens
 2560(H) × 1920(V) Resolution
 DWDR, 3DNR, AWB, BLC
 4 Power EXIR LED
 50m Warmlight Length
 OSD Menu by UTC (output 4-in-1)
 Built in MIC
 IP66, Metal Case, Easy Installation

40.60.000



AC-BH7150-WSA

5.0 Megapixel Camera
 1/2.8" Starlight CMOS Sensor
 3.6mm F1.2 Starlight Fixed Lens
 2560(H) × 1920(V) Resolution
 DWDR, 3DNR, AWB, BLC
 8 Power LED
 50m Warmlight Length
 OSD Menu by UTC (output 4-in-1)
 Built in MIC
 IP66, Metal Case

38.600.000



AC-BH6650-WSA

5.0 Megapixel Camera
 1/2.8" Starlight CMOS Sensor
 3.6mm F1.2 Starlight Fixed Lens
 2560(H) × 1920(V) Resolution
 DWDR, 3DNR, AWB, BLC
 9 Sunny LED
 50m Warmlight Length
 OSD Menu by UTC (output 4-in-1)
 Built in MIC
 IP66, Metal Case, Easy Installation

35.000.000



AC-BH5720-WS

2.0 Megapixel Camera
 1/2.9" Starlight CMOS Sensor
 3.6mm F1.2 Starlight Fixed Lens
 1920(H) × 1080(V) Resolution
 DWDR, 3DNR, AWB, BLC
 3 EXIR LED
 30m Warmlight Length
 OSD Menu by UTC (output 4-in-1)
 IP66, Metal Case, Easy Installation

26.400.000



AC-BH5220-WSL

2.0 Megapixel Camera
 1/2.9" Starlight CMOS Sensor
 3.6mm Fixed Lens
 1920(H) × 1080(V) Resolution
 DWDR, 3DNR, AWB, BLC
 3 EXIR LED
 30m Warmlight Length
 OSD Menu by UTC (output 4-in-1)
 IP66, Metal-Plastic (Makrolon) Case
 Easy Installation

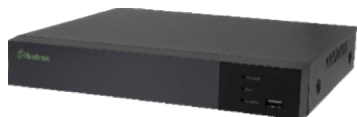
21.600.000

SMD **AAD-7104ZFN-A1****90.800.000**

4CH H.265 **5MP-Lite** XVR
4CH Camera + 1CH IP Camera
Preview : 4*(5MP-Lite@20)fps
Record : 4*(5MP-Lite@12/4MP-Lite@17/1080P@15/1080P-Lite@25)fps
4CH Playback
Support 4CH SMD, 4CH Perimeter/Tripwire
Support Face Detection 1CH (Special Firmware, Not At The Same Time As SMD)
Support AOC In TVI Mode (DAC Technology / Broadcast Quality Audio)
Pentabrid (Analoge,AHD,CVI,TVI,IP)
HDMI 1080P & VGA Video Simultaneous Output
1 SATA HDD Up to 10TB
1/1Ch Audio In/Out, 2*USB 2.0, 1*10/100 Mbps LAN Interface
P2P support, Onvif
IOS-Andriod FARA VIEW App, Adaptive Iran & International Servers

SMD **AAD-9104ZFN-4KL/A4****122.700.000**

4CH H.265 **Real 5MP** XVR
4CH Camera (Analog & IP)
Preview : 4*(5MP@12)fps
Record : 4*(5MP@12/4MP@15/1080P@25)fps
4CH Playback
Support SMD (Human/Vehicle Clasification For 4CH)
Support AOC In TVI Mode (DAC Technology / Broadcast Quality Audio)
Pentabrid (Analoge,AHD,CVI,TVI,IP)
HDMI 4K & VGA Video Simultaneous Output
1 SATA HDD Up to 10TB
4/1 CH Audio In/Out, 2*USB 2.0, 1*10/100 Mbps LAN Interface
P2P support, Onvif
IOS-Andriod FARA VIEW App, Adaptive Iran & International Servers

SMD  **HISILICON**
NEW AI Chipset**AAD-9104ZHN-4KL/A4****125.600.000**

4CH H.265 **4K-Lite & Real 5MP** XVR
4CH Camera + 2CH IP Camera
Preview : 4*(8MP-Lite@15/5MP@12)fps
Record : 4*(8MP-Lite@15/5MP@12/4MP@16/1080P@25)fps
4CH Playback (2CH@15fps + 2CH@1fps)
Support 4CH SMD, 4CH Perimeter/Tripwire
Support Face Detection
Support LPD
Support AOC In TVI Mode (DAC Technology / Broadcast Quality Audio)
Pentabrid (Analoge,AHD,CVI,TVI,IP)
HDMI 4K & VGA Video Simultaneous Output, Analog Video Output (BNC)
1 SATA HDD Up to 10TB
4/1 CH Audio In/Out, 2*USB 2.0, 1*10/100 Mbps LAN Interface, RS-485 Port
P2P support, Onvif
IOS-Andriod FARA VIEW App, Adaptive Iran & International Servers

SMD



New Ultra Model



AAD-7108ZFU-A1

115.000.000

8CH H.265 **5MP-Lite** XVR
8CH Camera + 2CH IP Camera
Preview : 8*(5MP-Lite@12)fps
Record : 8*(5MP-Lite@12/1080P-Lite@25)fps
8CH Playback
Support 8CH SMD, 8CH Perimeter/Tripwire
Support Face Detection
Support AOC In TVI Mode (DAC Technology / Broadcast Quality Audio)
Pentabrid (Analoge,AHD,CVI,TVI,IP)
HDMI & VGA Video Simultaneous Output
1 SATA HDD Up to 10TB
1/1 CH Audio In/Out, 2*USB 2.0, 1*10/100 Mbps LAN Interface
P2P support, Onvif
IOS-Andriod FARA VIEW App, Adaptive Iran & International Servers

SMD



HISILICON
NEW AI Chipset



AAD-7108ZHN-A4

122.500.000

8CH H.265 **5MP-Lite** XVR
8CH Camera + 4CH IP Camera
Preview : 8*(5MP-Lite@20)fps
Record : 8*(5MP-Lite@12/1080P@15)fps
8CH Playback (4CH@12fps + 4CH@1fps)
Support 8CH SMD, 4CH Perimeter/Tripwire
Support Face Detection
Support LPD
Support AOC In TVI Mode (DAC Technology / Broadcast Quality Audio)
Pentabrid (Analoge,AHD,CVI,TVI,IP)
HDMI & VGA Video Simultaneous Output, Analog Video Output (BNC)
1 SATA HDD Up to 10TB
4/1 CH Audio In/Out, 2*USB - 1*10/100 Mbps LAN Interface, RS-485 Port
P2P support, Onvif
IOS-Andriod FARA VIEW App, Adaptive Iran & International Servers

SMD



AAD-9108ZFN-4KL/A4

181.000.000

8CH H.265 **4K-Lite & Real 5MP** XVR
8CH Camera (Analog & IP)
Preview : 8*(4K-Lite@15/5MP@12)fps
Record : 8*(4K-Lite@9/5MP@8/4MP@10/1080P@20)fps
8CH Playback
Support SMD (Human/Vehicle Clasification For 8CH)
Support Face Detection (Special Firmware, Not At The Same Time As SMD)
Support AOC In TVI Mode (DAC Technology / Broadcast Quality Audio)
Pentabrid (Analoge,AHD,CVI,TVI,IP)
HDMI 4K & VGA Video Simultaneous Output
1 SATA HDD Up to 10TB (Change Adaptur to 12V/5A)
4/1 CH Audio In/Out, 2*USB 2.0, 1*10/100 Mbps LAN Interface
P2P support, Onvif
IOS-Andriod FARA VIEW App, Adaptive Iran & International Servers

SMD   

 **HISILICON**
NEW AI Chipset



AAD-9108ZHN-4KL/A4

184.700.000

8CH H.265 **4K-Lite & Real 5MP** XVR
8CH Camera + 4CH IP Camera
Preview : 8*(4K-Lite@15/5MP@12)fps
Record : 8*(4K-Lite@9/5MP@8/1080P@20)fps
8CH Playback
Support 8CH SMD, 4CH Perimeter/Tripwire
Support Face Detection
Support LPD
Support AOC In TVI Mode (DAC Technology / Broadcast Quality Audio)
Pentabrid (Analoge,AHD,CVI,TVI,IP)
HDMI 4K & VGA Video Simultaneous Output, Analog Video Output (BNC)
1 SATA HDD Up to 10TB
4/1Ch Audio In/Out, 2*USB 2.0, 1*10/100 Mbps LAN Interface, RS-485 Port
P2P support, Onvif
IOS-Andriod FARA VIEW App, Adaptive Iran & International Servers

SMD  



AAD-7116ZFN-A1

207.500.000

16CH H.265 **5MP-Lite** XVR
16CH Camera + 4CH IP Camera
Preview : 16*(5MP-Lite@12)fps
Record : 16*(5MP-Lite@6/4MP-Lite@8/1080P-Lite@16)fps
16CH Playback
Support SMD (Human/Vehicle Clasification For 16CH)
Support Face Detection (Special Firmware, Not At The Same Time As SMD)
Support AOC In TVI Mode (DAC Technology / Broadcast Quality Audio)
Pentabrid (Analoge,AHD,CVI,TVI,IP)
HDMI & VGA Video Simultaneous Output
1 SATA HDD Up to 10TB
1/1 CH Audio In/Out, 2*USB 2.0, 1*10/100 Mbps LAN Interface
P2P support, Onvif
IOS-Andriod FARA VIEW App, Adaptive Iran & International Servers

SMD   

 **HISILICON**
NEW AI Chipset



AAD-7116ZHN-A1

214.000.000

16CH H.265 **5MP-Lite** XVR
16CH Camera + 4CH IP Camera
Preview : 16*(5MP-Lite@12)fps
Record : 16*(5MP-Lite@6/4MP-Lite@8/1080P-Lite@16)fps
16CH Playback
Support 16CH SMD, 8CH Perimeter/Tripwire
Support Face Detection
Support LPD
Support AOC In TVI Mode (DAC Technology / Broadcast Quality Audio)
Pentabrid (Analoge,AHD,CVI,TVI,IP)
HDMI & VGA Video Simultaneous Output
1 SATA HDD Up to 10TB
1/1 CH Audio In/Out, 2*USB 2.0, 1*10/100 Mbps LAN Interface
P2P support, Onvif
IOS-Andriod FARA VIEW App, Adaptive Iran & International Servers

SMD   

 **HISILICON**
NEW AI Chipset



AA-9116ZHN-4KL/A4

279.500.000

16CH H.265 **4K-Lite & Real 5MP** XVR
16CH Camera + 4CH IP Camera
Preview : 16*(4K-Lite@15/5MP@12)fps
Record : 16*(4K-Lite@9/5MP@8/1080P@20)fps
16CH Playback
Support 16CH SMD, 8CH Perimeter/Tripwire
Support Face Detection
Support LPD
Support AOC In TVI Mode (DAC Technology / Broadcast Quality Audio)
Pentabrid (Analog,AHD,CVI,TVI,IP)
HDMI 4K & VGA Video Simultaneous Output
1 SATA HDD Up to 10TB
4/1Ch Audio In/Out, 2*USB 2.0, 1*10/100 Mbps LAN Interface, RS-485 Port
P2P support, Onvif
IOS-Andriod FARA VIEW App, Adaptive Iran & International Servers

SMD   

 **HISILICON**
NEW AI Chipset



AA-9232ZHN-4KL/A4

593.500.000

32CH H.265 **4K-Lite & Real 5MP** XVR
32CH Camera (Analog & IP)
Preview : 32*(4K-Lite@15/5MP@12)fps
Record : 32*(4K-Lite@7/5MP@6/1080P@15)fps
16CH Playback
Support 16CH SMD, 8CH Perimeter/Tripwire
Support Face Detection
Support LPD
Support AOC In TVI Mode (DAC Technology / Broadcast Quality Audio)
Pentabrid (Analog,AHD,CVI,TVI,IP)
HDMI 4K & VGA Video Simultaneous Output, Analog Video Output (BNC)
2 SATA HDD Each Up to 10TB
4/1 CH Audio In/Out, 4/1 Alarm In/Out, 2*USB
1*10/100/1000 Mbps LAN Interface, RS-485 Port
P2P support, Onvif
IOS-Andriod FARA VIEW App, Adaptive Iran & International Servers

Albatron

لیست قیمت محصولات IP الباترون فروردین ماه ۱۴۰۵



AC-DI29200PU-WSAF-IF

1/2.9" 2.4Megapixel **New** Starlight CMOS Sensor
 Main Stream 2.0MP (1920*1080)@25/30fps
 H.265/H.264 Encoding, Dual Stream
 2.8mm F1.6 Starlight Advanced Fixed Lens
 Built in Microphone
 3DNR, HLC, BLC
 3 EXIR LED, 30m Warmlight Length
 Onvif (Compatible with Dahua, Hikvision, Maxron & etc)
 Private Protocol With Z Series XVR & NVR
 SMD (Human/Vehicle Detection), Perimeter, Tripwire
 IP67 Metal Case, Easy Installation
 12VDC, Smart PoE Board
 Fara View Mobile Monitoring, VMS Monitoring

47.500.000



AC-DI29200P-WSAF-IF

1/2.9" 2.4Megapixel Starlight CMOS Sensor
 Main Stream 2.0MP (1920*1080)@25/30fps
 H.265/H.264 Encoding, Dual Stream
 2.8mm F1.6 Starlight Advanced Fixed Lens
 Built in Microphone
 3DNR, HLC, BLC
 3 EXIR LED, 30m Warmlight Length
 Onvif (Compatible with Dahua, Hikvision, Maxron & etc)
 Private Protocol With Z Series XVR & NVR
 SMD (Human/Vehicle Detection), Perimeter, Tripwire
 IP67 Metal Case, Easy Installation
 12VDC, Smart PoE Board
 Fara View Mobile Monitoring, VMS Monitoring

47.500.000



AC-DI29500PI-WSAF-IF

1/3" 5.0Megapixel Starlight CMOS Sensor
 Main Stream 5.0MP (2880*1620)@25/30fps
 H.265/H.264 Encoding, Dual Stream
 2.8mm F1.6 Starlight Advanced Fixed Lens
 Built in Microphone
 3DNR, HLC, BLC
 3 EXIR LED, 30m Warmlight Length
 Onvif (Compatible with Dahua, Hikvision, Maxron & etc)
 Private Protocol With Z Series XVR & NVR
 SMD (Human/Vehicle Detection), Perimeter, Tripwire
 IP67 Metal Case, Easy Installation
 12VDC, Integrated PoE (Onboard)
 Fara View Mobile Monitoring, VMS Monitoring

59.300.000



AC-DI29500P-WSAH-IF

1/3" 5.0Megapixel Starlight CMOS Sensor, **HiSilicon Chipset**
 Main Stream 5.0MP (2880*1620)@25/30fps
 H.265/H.264 Encoding, Dual Stream
 2.8mm F1.6 Starlight Advanced Fixed Lens
 Built in Microphone
 3DNR, HLC, BLC
 3 EXIR LED, 30m Warmlight Length
 Onvif (Compatible with Dahua, Hikvision, Maxron & etc)
 Private Protocol With Z Series XVR & NVR
 SMD (Human/Vehicle Detection), Face Detection,
 Perimeter, Tripwire, Loitering, People Counting
 IP67 Metal Case, Easy Installation
 12VDC, Smart PoE Board
 Fara View Mobile Monitoring, VMS Monitoring

62.900.000



AC-DI29500P-WSAF-IF

1/3" 5.0Megapixel Starlight CMOS Sensor
Main Stream 5.0MP (2880*1620)@25/30fps
H.265/H.264 Encoding, Dual Stream
2.8mm F1.6 Starlight Advanced Fixed Lens
Built in Microphone
3DNR, HLC, BLC
3 EXIR LED, 30m Warmlight Length
Onvif (Compatible with Dahua, Hikvision, Maxron & etc)
Private Protocol With Z Series XVR & NVR
SMD (Human/Vehicle Detection), Perimeter, Tripwire
IP67 Metal Case, Easy Installation
12VDC, Smart PoE Board
Fara View Mobile Monitoring, VMS Monitoring

62.900.000



AC-DI27500P-WSAF-IF

1/3" 5.0Megapixel Starlight CMOS Sensor
Main Stream 5.0MP (2880*1620)@25/30fps
H.265/H.264 Encoding, Dual Stream
2.8mm F1.6 Starlight Advanced Fixed Lens
Built in Microphone
3DNR, HLC, BLC
3 EXIR LED, 30m Warmlight Length
Onvif (Compatible with Dahua, Hikvision, Maxron & etc)
Private Protocol With Z Series XVR & NVR
SMD (Human/Vehicle Detection), Perimeter, Tripwire
IP67 Metal Case, Easy Installation
12VDC, Smart PoE Board
Fara View Mobile Monitoring, VMS Monitoring

62.900.000



AC-DI29510P-WSAF-IF

1/2.7" 5.0Megapixel Starlight CMOS Sensor
Pro Series 16:9 Ratio
Main Stream 5.0MP (2880*1620)@25/30fps
H.265/H.264 Encoding, Dual Stream
2.8mm F1.6 Starlight Advanced Fixed Lens
Built in Microphone
120db WDR, 3DNR, HLC, BLC
3 EXIR LED, 30m Warmlight Length
Onvif (Compatible with Dahua, Hikvision, Maxron & etc)
Private Protocol With Z Series XVR & NVR
SMD (Human/Vehicle Detection), Face Detection,
Perimeter, Tripwire, Loitering, People Counting
IP67 Metal Case, Easy Installation
12VDC, Smart PoE Board
Fara View Mobile Monitoring, VMS Monitoring

83.000.000



AC-BI59200PU-WSAF-IF

1/2.9" 2.4Megapixel **New** Starlight CMOS Sensor
 Main Stream 2.0MP (1920*1080)@25/30fps
 H.265/H.264 Encoding, Dual Stream
 3.6mm F1.6 Starlight Advanced Fixed Lens
 Built in Microphone
 3DNR, HLC, BLC
 3 EXIR LED, 30m Warmlight Length
 Onvif (Compatible with Dahua, Hikvision, Maxron & etc)
 Private Protocol With Z Series XVR & NVR
 SMD (Human/Vehicle Detection), Perimeter, Tripwire
 IP67 Metal Case, Easy Installation
 12VDC, Smart PoE Board
 Fara View Mobile Monitoring, VMS Monitoring

46.300.000



AC-BI59200P-WSAF-IF

1/2.9" 2.4Megapixel Starlight CMOS Sensor
 Main Stream 2.0MP (1920*1080)@25/30fps
 H.265/H.264 Encoding, Dual Stream
 3.6mm F1.6 Starlight Advanced Fixed Lens
 Built in Microphone
 3DNR, HLC, BLC
 3 EXIR LED, 30m Warmlight Length
 Onvif (Compatible with Dahua, Hikvision, Maxron & etc)
 Private Protocol With Z Series XVR & NVR
 SMD (Human/Vehicle Detection), Perimeter, Tripwire
 IP67 Metal Case, Easy Installation
 12VDC, Smart PoE Board
 Fara View Mobile Monitoring, VMS Monitoring

46.300.000



AC-BI58500P-WSAH-IF

1/3" 5.0Megapixel Starlight CMOS Sensor, **HiSilicon Chipset**
 Main Stream 5.0MP (2880*1620)@25/30fps
 H.265/H.264 Encoding, Dual Stream
 3.6mm F1.6 Starlight Advanced Fixed Lens
 Built in Microphone
 3DNR, HLC, BLC
 3 EXIR LED, 30m Warmlight Length
 Onvif (Compatible with Dahua, Hikvision, Maxron & etc)
 Private Protocol With Z Series XVR & NVR
 SMD (Human/Vehicle Detection), Face Detection,
 Perimeter, Tripwire, Loitering, People Counting
 IP67 Metal Case, Easy Installation
 12VDC, Smart PoE Board
 Fara View Mobile Monitoring, VMS Monitoring

60.800.000



AC-BI58500P-WSAF-IF

1/3" 5.0Megapixel Starlight CMOS Sensor
 Main Stream 5.0MP (2880*1620)@25/30fps
 H.265/H.264 Encoding, Dual Stream
 3.6mm F1.6 Starlight Advanced Fixed Lens
 Built in Microphone
 3DNR, HLC, BLC
 3 EXIR LED, 30m Warmlight Length
 Onvif (Compatible with Dahua, Hikvision, Maxron & etc)
 Private Protocol With Z Series XVR & NVR
 SMD (Human/Vehicle Detection), Perimeter, Tripwire
 IP67 Metal Case, Easy Installation
 12VDC, Smart PoE Board
 Fara View Mobile Monitoring, VMS Monitoring

60.800.000



AC-BI69500P-WSAH-IF

1/3" 5.0Megapixel Starlight CMOS Sensor, **HiSilicon Chipset**
 Main Stream 5.0MP (2880*1620)@25/30fps
 H.265/H.264 Encoding, Dual Stream
 3.6mm F1.6 Starlight Advanced Fixed Lens
 Built in Microphone
 3DNR, HLC, BLC
 4 EXIR LED, 40m Warmlight Length
 Onvif (Compatible with Dahua, Hikvision, Maxron & etc)
 Private Protocol With Z Series XVR & NVR
 SMD (Human/Vehicle Detection), Face Detection,
 Perimeter, Tripwire, Loitering, People Counting
 IP67 Metal Case, Easy Installation
 12VDC, Smart PoE Board
 Fara View Mobile Monitoring, VMS Monitoring

62.200.000



AC-BI69500P-WSAF-IF

1/3" 5.0Megapixel Starlight CMOS Sensor
 Main Stream 5.0MP (2880*1620)@25/30fps
 H.265/H.264 Encoding, Dual Stream
 3.6mm F1.6 Starlight Advanced Fixed Lens
 Built in Microphone
 3DNR, HLC, BLC
 4 EXIR LED, 40m Warmlight Length
 Onvif (Compatible with Dahua, Hikvision, Maxron & etc)
 Private Protocol With Z Series XVR & NVR
 SMD (Human/Vehicle Detection), Perimeter, Tripwire
 IP67 Metal Case, Easy Installation
 12VDC, Smart PoE Board
 Fara View Mobile Monitoring, VMS Monitoring

62.200.000



AC-BI75500P-WSAH-IF

1/3" 5.0Megapixel Starlight CMOS Sensor, **HiSilicon Chipset**
 Main Stream 5.0MP (2880*1620)@25/30fps
 H.265/H.264 Encoding, Dual Stream
 3.6mm F1.6 Starlight Advanced Fixed Lens
 Built in Microphone
 3DNR, HLC, BLC
 5 Power EXIR LED, 60m Warmlight Length
 Onvif (Compatible with Dahua, Hikvision, Maxron & etc)
 Private Protocol With Z Series XVR & NVR
 SMD (Human/Vehicle Detection), Face Detection,
 Perimeter, Tripwire, Loitering, People Counting
 IP67 Metal Case, Easy Installation
 12VDC, Smart PoE Board
 Fara View Mobile Monitoring, VMS Monitoring

70.600.000



AC-BI70510P-WSAF-IF

1/2.7" 5.0Megapixel Starlight CMOS Sensor
 Pro Series 16:9 Ratio, Dual Board (Processor & Sensor)
 Main Stream 5.0MP (2880*1620)@25/30fps
 H.265/H.264 Encoding, Dual Stream
 3.6mm F1.6 Starlight Advanced Fixed Lens
 Built in Microphone
 120db WDR, 3DNR, HLC, BLC
 4 Power EXIR LED, 50m Warmlight Length
 Onvif (Compatible with Dahua, Hikvision, Maxron & etc)
 Private Protocol With Z Series XVR & NVR
 SMD (Human/Vehicle Detection), Face Detection,
 Perimeter, Tripwire, Loitering, People Counting
 IP67 Metal Case, Easy Installation
 12VDC, Smart PoE Board
 Fara View Mobile Monitoring, VMS Monitoring

84.200.000



AC-BI75500P-WZAF-IF

1/1.8" 5.0Megapixel Super LowLight CMOS Sensor
 Dual Board (Processor & Sensor)
 Main Stream 5.0MP (2880*1620)@25/30fps
 H.265/H.264 Encoding, Dual Stream
 4.0mm F1.0 Starlight Advanced Fixed Lens
 Built in Microphone
 Digital WDR, 3DNR, HLC, BLC
 5 Power EXIR LED, 60m Warmlight Length
 Onvif (Compatible with Dahua, Hikvision, Maxron & etc)
 Private Protocol With Z Series XVR & NVR
 SMD (Human/Vehicle Detection)
 IP67 Metal Case, Easy Installation
 12VDC, Smart PoE Board
 Fara View Mobile Monitoring, VMS Monitoring

114.500.000



AC-BI69810P-WSAF-IF

1/2.8" 8.0Megapixel SONY STARVIS IMX415 Sensor
 Dual Board (Processor & Sensor)
 Main Stream 8.0MP (3840*2160)@20fps
 H.265/H.264 Encoding, Dual Stream
 3.6mm F1.6 Starlight Advanced Fixed Lens
 Built in Microphone
 120db WDR, 3DNR, HLC, BLC
 4 EXIR LED, 40m Warmlight Length
 Onvif (Compatible with Dahua, Hikvision, Maxron & etc)
 Private Protocol With Z Series XVR & NVR
 SMD (Human/Vehicle Detection), Face Detection,
 Perimeter, Tripwire, Loitering, People Counting
 Licence Plate Detection (LPD With Software Update)
 IP67 Metal Case, 12VDC, Smart PoE Board
 Fara View Mobile Monitoring, VMS Monitoring

118.500.000



AC-BI70810P-WSAF-IF

1/2.8" 8.0Megapixel SONY STARVIS IMX415 Sensor
 Dual Board (Processor & Sensor)
 Main Stream 8.0MP (3840*2160)@20fps
 H.265/H.264 Encoding, Dual Stream
 3.6mm F1.6 Starlight Advanced Fixed Lens
 Built in Microphone
 120db WDR, 3DNR, HLC, BLC
 4 Power EXIR LED, 50m Warmlight Length
 Onvif (Compatible with Dahua, Hikvision, Maxron & etc)
 Private Protocol With Z Series XVR & NVR
 SMD (Human/Vehicle Detection), Face Detection,
 Perimeter, Tripwire, Loitering, People Counting
 Licence Plate Detection (LPD With Software Update)
 IP67 Metal Case, Easy Installation
 12VDC, Smart PoE Board
 Fara View Mobile Monitoring, VMS Monitoring

127.500.000



AC-BI72810P-WSAF-IF

1/2.8" 8.0Megapixel SONY STARVIS IMX415 Sensor
 Dual Board (Processor & Sensor)
 Main Stream 8.0MP (3840*2160)@20fps
 H.265/H.264 Encoding, Dual Stream
 3.6mm F1.6 Starlight Advanced Fixed Lens
 Built in Microphone
 120db WDR, 3DNR, HLC, BLC
 4 Power EXIR LED, 50m Warmlight Length
 Onvif (Compatible with Dahua, Hikvision, Maxron & etc)
 Private Protocol With Z Series XVR & NVR
 SMD (Human/Vehicle Detection), Face Detection,
 Perimeter, Tripwire, Loitering, People Counting
 Licence Plate Detection (LPD With Software Update)
 IP67 Metal Case, 12VDC, Smart PoE Board
 Fara View Mobile Monitoring, VMS Monitoring

127.500.000

Dual Light **SMD** Smart Motion Detection 



NEW

AC-BI70810P-DSAF-ZIF

1/2.8" 8.0Megapixel SONY STARVIS IMX415 Sensor
 Dual Board (Processor & Sensor)
 Main Stream 8.0MP (3840*2160)@20fps
 H.265/H.264 Encoding, Dual Stream
 2.8~12mm F1.6 Starlight Advanced **Motorized** Lens
 Built in Microphone
 120db WDR, 3DNR, HLC, BLC
 (6+4) Dual EXIR LED, 80m Warmlight, 90m IR Length
 Onvif (Compatible with Dahua, Hikvision, Maxron & etc)
 Private Protocol With Z Series XVR & NVR
 SMD (Human/Vehicle Detection), Face Detection,
 Perimeter, Tripwire, Loitering, People Counting
 Licence Plate Detection (LPD With Software Update)
 IP67 Metal Case, Easy Installation
 12VDC, Smart PoE Board
 Fara View Mobile Monitoring, VMS Monitoring

193.500.000

Dual Light **SMD** Smart Motion Detection 



NEW

AC-BI70810P-DSAF-IF16

1/2.8" 8.0Megapixel SONY STARVIS IMX415 Sensor
 Dual Board (Processor & Sensor)
 Main Stream 8.0MP (3840*2160)@20fps
 H.265/H.264 Encoding, Dual Stream
 16mm F1.6 Starlight Advanced Fixed Lens
 Built in Microphone
 120db WDR, 3DNR, HLC, BLC
 (6+4) Dual EXIR LED, 80m Warmlight, 90m IR Length
 Onvif (Compatible with Dahua, Hikvision, Maxron & etc)
 Private Protocol With Z Series XVR & NVR
 SMD (Human/Vehicle Detection), Face Detection,
 Perimeter, Tripwire, Loitering, People Counting
 Licence Plate Detection (LPD With Software Update)
 IP67 Metal Case, Easy Installation
 12VDC, Smart PoE Board
 Fara View Mobile Monitoring, VMS Monitoring

144.000.000

SMD



ANR-8110F-4K

CALL

10CH H.265 4K (8.0MP) NVR
80Mbps Incoming Bandwidth
10Ch Live View, Up to 8.0MP Resolution for Preview & Playback
Decode Capacity : 1*(4K@25fps)
Playback 10CH (Main Stream + Sub Stream)
Ai By Camera (Full Channel SMD, Face Detection, Perimeter, Tripwire)
Digital Audio Support
HDMI 4K & VGA Video Simultaneous Output
1 SATA HDD Up to 10TB
1 CH Audio Out, 2*USB 2.0, 1*10/100 Mbps LAN Interface
P2P support, Onvif
IOS-Andriod FARA VIEW App, Adaptive Iran & International Servers

SMD



HISILICON
NEW AI Chipset



ANR-9110i-4K

116.500.000

10CH H.265 4K (8.0MP) NVR
100Mbps Incoming Bandwidth
10Ch Live View, Up to 8.0MP Resolution for Preview & Playback
Decode Capacity : 1*(4K@25fps)
Playback 10CH (Main Stream + Sub Stream)
Ai By Camera (Full Channel LPD, SMD, Perimeter, Tripwire)
Ai By NVR (1Ch Face Recognition, 4Ch SMD, 4Ch Perimeter/Tripwire)
Digital Audio Support
HDMI 4K & VGA Video Simultaneous Output
1 SATA HDD Up to 10TB
1 CH Audio Out, 2*USB 2.0, 1*10/100 Mbps LAN Interface
P2P support, Onvif
IOS-Andriod FARA VIEW App, Adaptive Iran & International Servers

SMD



HISILICON
NEW AI Chipset



ANR-9120H-4K

164.000.000

20Ch H.265 4K (8.0MP) NVR
160Mbps Incoming Bandwidth
20Ch Live View, Up to 8.0MP Resolution for Preview & Playback
Decode Capacity : 2*(4K@25fps)
Playback 16Ch (Main Stream + Sub Stream)
Ai By Camera (Full Channel LPD, SMD, Face Detection, Perimeter, Tripwire)
Ai By NVR (4Ch SMD, 4Ch Face Detection, 4Ch Perimeter/Tripwire)
Digital Audio Support
HDMI 4K & VGA Video Simultaneous Output
1 SATA HDD Up to 10TB
1 Ch Audio Out, 3*USB 2.0, 1*10/100/1000 Mbps LAN Interface, RS-485
P2P support, Onvif
IOS-Andriod FARA VIEW App, Adaptive Iran & International Servers



ANR-9120i-4K

156.600.000

20Ch H.265 4K (8.0MP) NVR
 120Mbps Incoming Bandwidth
 20Ch Live View, Up to 8.0MP Resolution for Preview & Playback
 Decode Capacity : 4*(4K@25fps)
 Playback 16Ch (Main Stream + Sub Stream)
 Ai By Camera (Full Channel LPD, SMD, Perimeter, Tripwire)
 Ai By NVR (1Ch Face Recognition, 4Ch SMD, 4Ch Perimeter/Tripwire)
 Digital Audio Support
 HDMI 4K & VGA Video Simultaneous Output
 1 SATA HDD Up to 10TB
 1 Ch Audio Out, 3*USB 2.0, 1*10/100/1000 Mbps LAN Interface, RS-485
 P2P support, Onvif
 IOS-Andriod FARA VIEW App, Adaptive Iran & International Servers



HISILICON
 NEW AI Chipset



ANR-9132H-4K

198.000.000

32Ch H.265 4K (8.0MP) NVR
 200Mbps Incoming Bandwidth
 32Ch Live View, Up to 8.0MP Resolution for Preview & Playback
 Decode Capacity : 4*(4K@25fps)
 Playback 16Ch (Main Stream + Sub Stream)
 Ai By Camera (Full Channel LPD, SMD, Face Detection, Perimeter, Tripwire)
 Ai By NVR (8Ch SMD, 4Ch Face Detection, 8Ch Perimeter/Tripwire)
 Digital Audio Support
 HDMI 4K & VGA Video Simultaneous Output
 1 SATA HDD Up to 10TB
 1 Ch Audio Out, 3*USB 2.0, 1*10/100/1000 Mbps LAN Interface, RS-485
 P2P support, Onvif
 IOS-Andriod FARA VIEW App, Adaptive Iran & International Servers

FARA - Z MODEM



FZ4000G

43.700.000

4G/LTE USB Modem
 ASR1803S chip platform
 Built-in antenna / Plug and Play
 FDD-LTE 150Mbps & TDD-LTE 130Mbps Cat4
 Compatible With Z Series XVR & NVR
 Power : 5~18V/0.5~1A
 89.6mm*28.6mm*13mm / 50g

این مودم با دستگاه های سری زد همخوانی کامل داشته و از طریق اتصال یو اس بی، اینترنت پر سرعت را در اختیار کاربر می گذارد. به وسیله این مودم می توان از قابلیت ارسال اس ام اس دستگاه های سری زد استفاده نمود

**3 Output Relay Box
1 Output With 12VDC
1 RJ45 Web Management Interface
Compatible With Z Series XVR
12VDC Input (Without Adaptor)**



FARA AI ALARM BOX

33.200.000

این محصول به وسیله کابل شبکه به رکوردرهای سری زد متصل شده و با تعریف و پیاده سازی سناریوهای مختلف از طریق رکوردر و منوی خود محصول می توان از قابلیت های تشخیص انسان و خودروی دوربین و رکوردر در جهت فعال سازی خروجی محصول استفاده نمود تا خروجی تجهیزاتی از قبیل آژیر، تلفن کننده فرمان به دزدگیر و سایر تجهیزات فرمان پذیر را فعال کرد و از دوربین ها به عنوان دتکتور محیطی با هوش مصنوعی و دقت بسیار بالا استفاده نمود